



**A.camineti**

CASSETTE NORDIC SERIES

# NORDIC SERIES

## CASSETTE NORDIC 60

A<sup>+</sup>

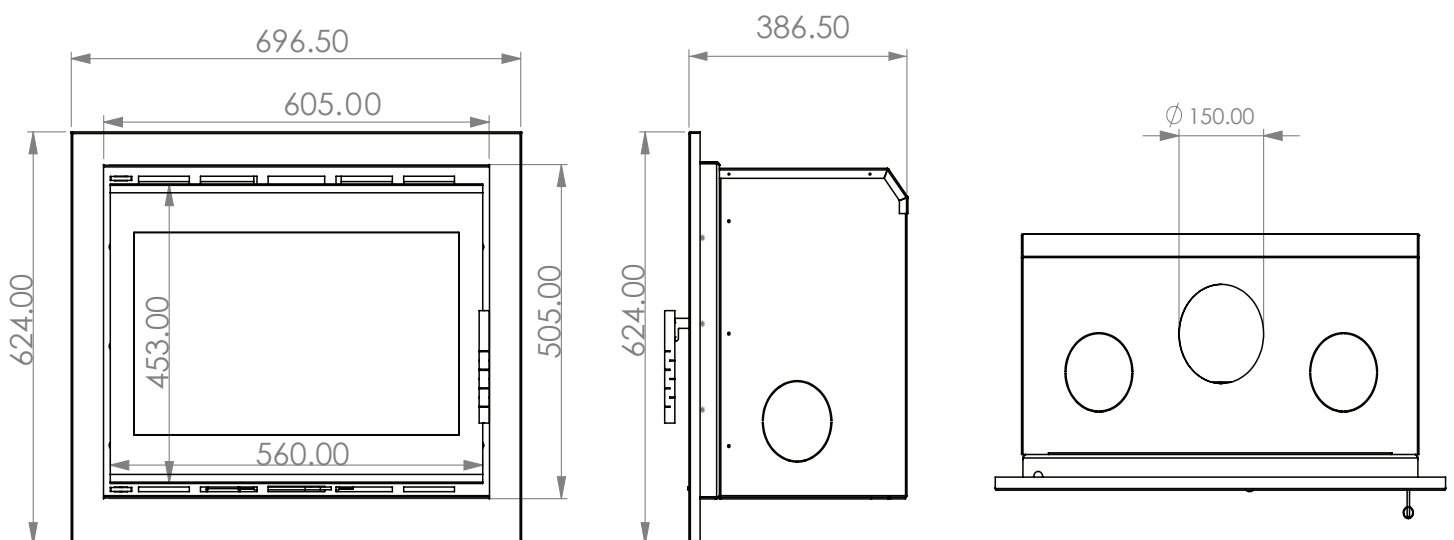
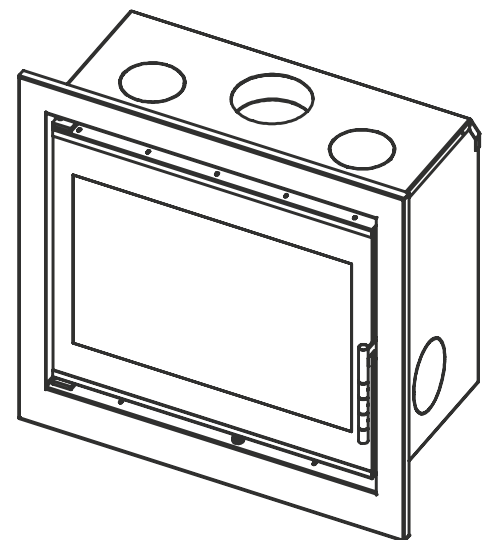


## TECHNICAL SPECIFICATION

MODEL	NORDIC 60
POWER	5-9 KW
EFFICIENCY	≥ 75%
CONSUME	2-3 KG/H
FRESH AIR INLET	∅ 150 MM
FLUE GAS TEMPERATURE	225 °C
FUEL	WOOD/BRIQUETTE
PIPE DIAMETER	∅ 150 MM
WARRANTY	5 YEARS

## OVERALL DIMENSION

HEIGHT	624 MM
DEPTH	386.50 MM
WIDTH	696.50 MM



# NORDIC SERIES

## CASSETTE NORDIC 70

A<sup>+</sup>



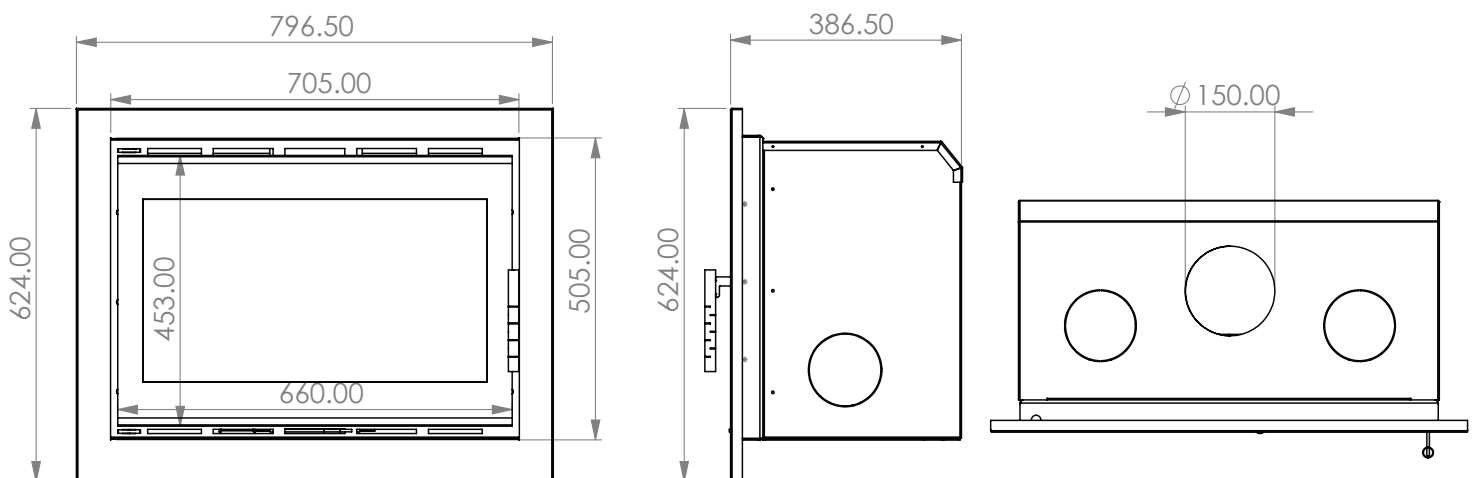
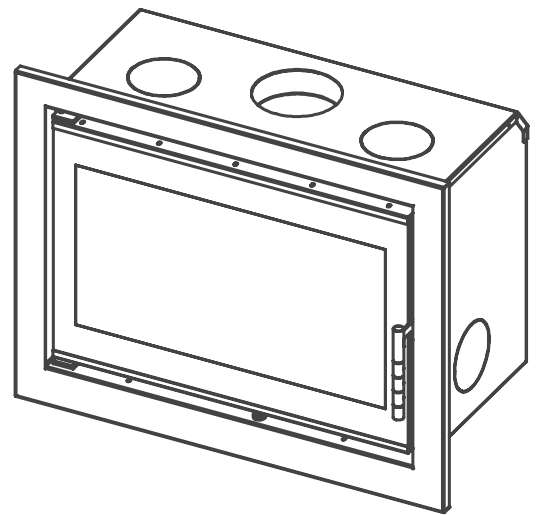
## TECHNICAL SPECIFICATION

MODEL **NORDIC 70**

POWER	5-9 KW
EFFICIENCY	≥ 75%
CONSUME	2-3 KG/H
FRESH AIR INLET	Ø 150 MM
FLUE GAS TEMPERATURE	222 °C
FUEL	WOOD/BRIQUETTE
PIPE DIAMETER	Ø 150 MM
WARRANTY	5 YEARS

## OVERALL DIMENSION

HEIGHT	624 MM
DEPTH	386.50 MM
WIDTH	796.50 MM



# NORDIC SERIES

## CASSETTE NORDIC 90

A<sup>+</sup>



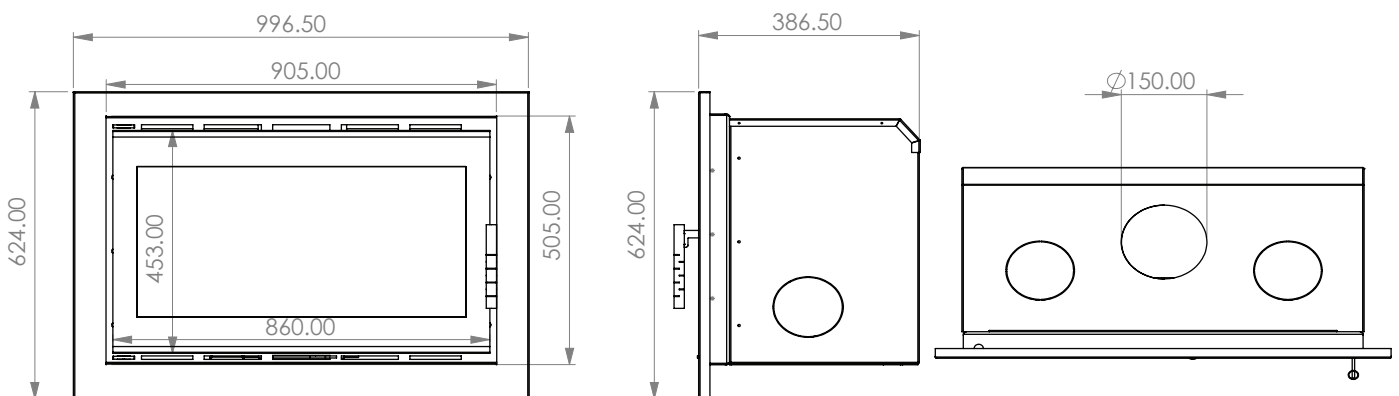
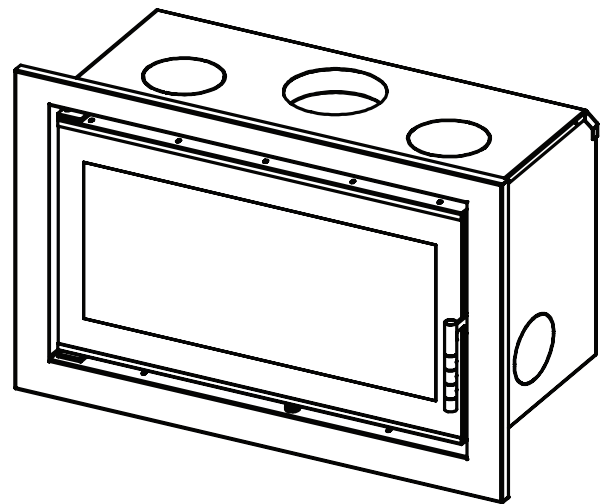
## TECHNICAL SPECIFICATION

## OVERALL DIMENSION

HEIGHT	624 MM
DEPTH	386.50 MM
WIDTH	996.50 MM

MODEL **NORDIC 90**

POWER	5- 10 KW
EFFICIENCY	≥ 75%
CONSUME	2-3 KG/H
FRESH AIR INLET	∅ 150 MM
FLUE GAS TEMPERATURE	196 °C
FUEL	WOOD/BRIQUETTE
PIPE DIAMETER	∅ 150 MM
WARRANTY	5 YEARS



# NORDIC SERIES

## CASSETTE NORDIC W70

A<sup>+</sup>



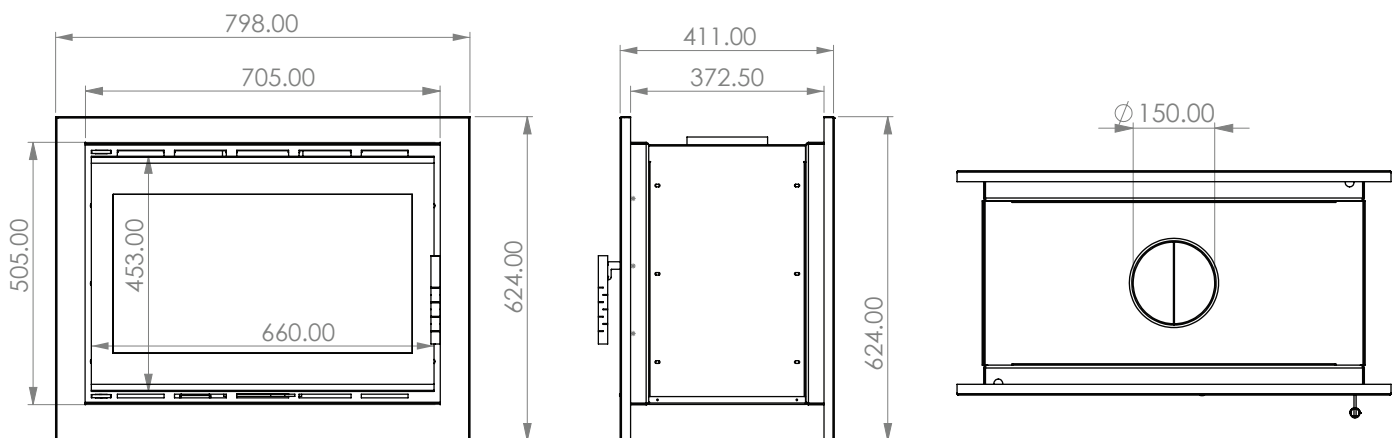
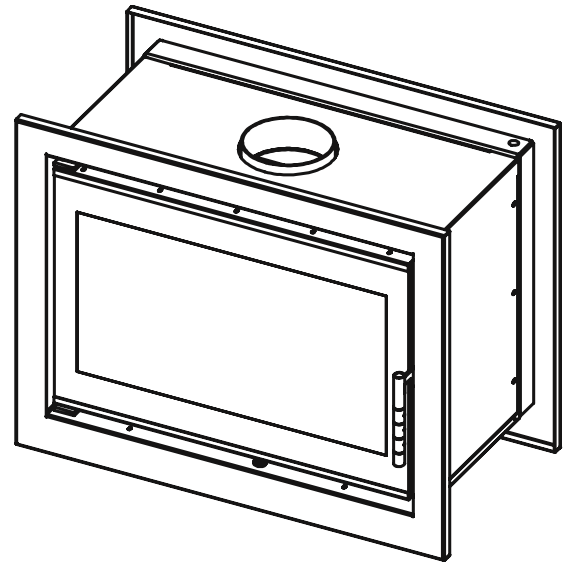


## TECHNICAL SPECIFICATION

MODEL	NORDIC W 70
POWER	5 - 9 KW
EFFICIENCY	≥ 75%
CONSUME	2-3 KG/H
FRESH AIR INLET	∅ 150 MM
FLUE GAS TEMPERATURE	220 °C
FUEL	WOOD/BRIQUETTE
PIPE DIAMETER	∅ 150 MM
WARRANTY	5 YEARS

## OVERALL DIMENSION

HEIGHT	624 MM
DEPTH	411 MM
WIDTH	798 MM



# NORDIC SERIES

## CASSETTE NORDIC W90

A+



## TECHNICAL SPECIFICATION

## OVERALL DIMENSION

MODEL **NORDIC W 90**

POWER	5 - 9 KW
EFFICIENCY	≥ 75%
CONSUME	2-3 KG/H
FRESH AIR INLET	∅ 150 MM
FLUE GAS TEMPERATURE	242 °C
FUEL	WOOD/BRIQUETTE
PIPE DIAMETER	∅ 150 MM
WARRANTY	5 YEARS

HEIGHT	624 MM
DEPTH	411 MM
WIDTH	998 MM

